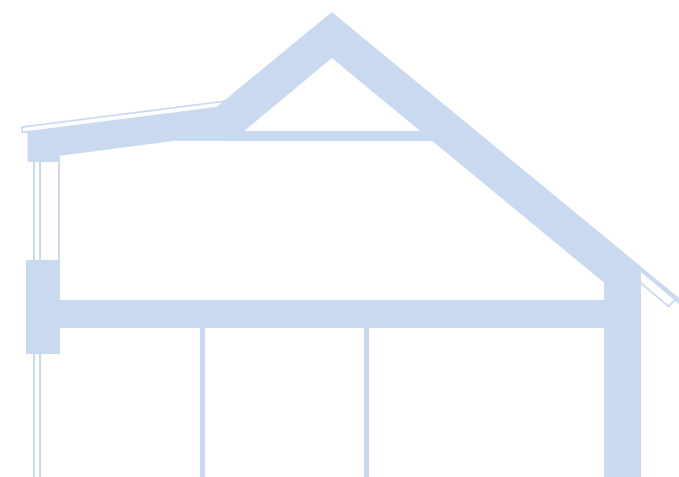
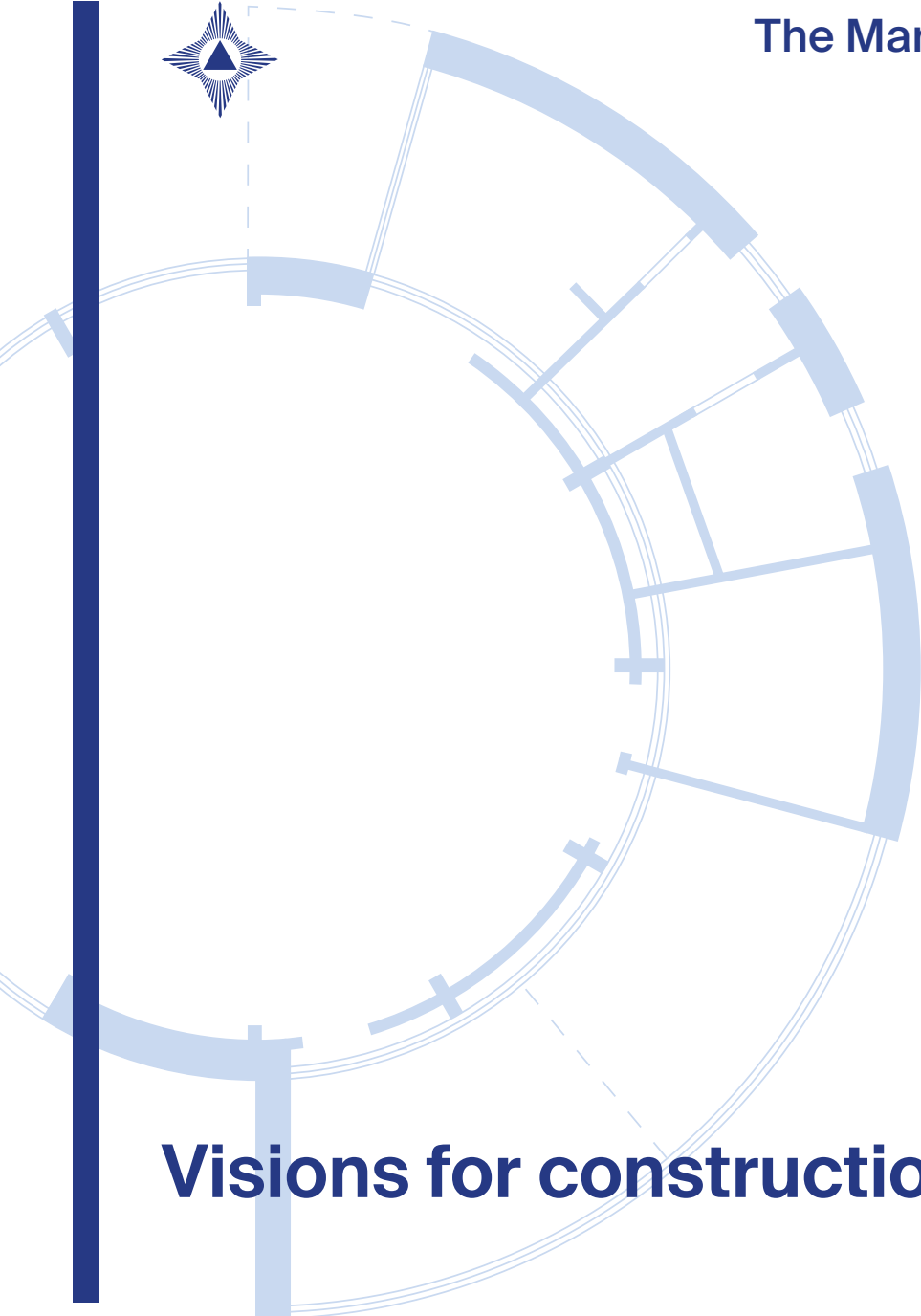




The Martinus Centre, Klint



Visions for construction

The Martinus Centre of the future

In a scenic area near the village of Klint, Martinus founded Kosmos Holiday Colony as a meeting place for the growing number of people interested in his spiritually scientific work. With support from friends of Martinus's cause, the colony has today developed into a modern centre for courses – the Martinus Centre, Klint – which is the centre for a major part of the teaching of Martinus's world picture.

Every year hundreds of people interested in Martinus's work attend lectures, study groups and courses, and Martinus's books are read and studied today by even more people, mainly in Scandinavia but also in other parts of the world.

In order to support the continued development of the Centre in Klint – with, among other things, the possibility for extended courses and all-year-round courses – it is now possible to support selected building projects. In this brochure you can read more about the projects and see detailed drawings and artist's impressions.

- An upgrade of Restaurant Terrassen with a new extension with more space for the kitchen, a laundry and a storeroom.
- Two new pavilions – Pav. D and H – with various types of rooms with private or shared facilities.
- A new educational building – the Round House
- The Orangery – a recreative space in the garden.

The building projects are outline projects and are subject to change.

Support the projects The realisation of the projected projects is dependent on the finances that are available. The Martinus gratefully accepts all donations – large and small. Those who are interested can support the building projects by paying a sum into the Martinus Institute's Danish bank account:



IBAN account: DK07 30000016913170

SWIFT BIC: DABADKKK

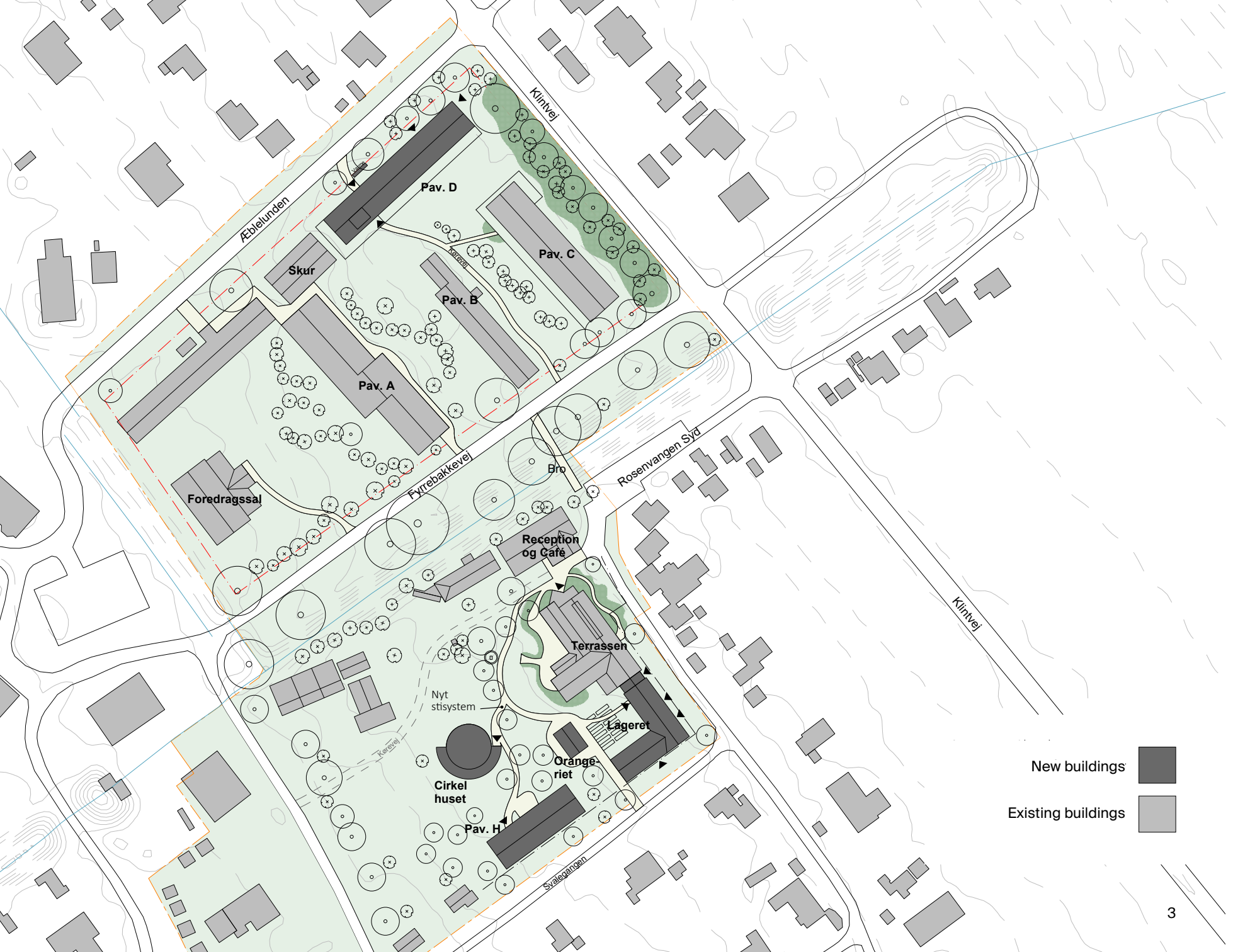
QR code: Visit our support page

Mark your donation “Building project at the Martinus Centre, Klint”.

→ Overview of the Martinus Centre, Klint with the new buildings: Pav. D and H, the Round House, the storeroom and the Orangery.

“It is my pleasure to inform you that the prospects for building a school for spiritual science, which in reality means a school for the science of life and universal love, have drawn much closer to being realised. ... This school should preferably be needed all the year round. But we must of course begin slowly and gradually expand its construction to meet our needs and according as our finances are such that we can manage this expansion. ... It will thus be the first school on Earth for intellectualised Christianity and a universally loving world culture.”

– Martinus, New Year's letter 1979



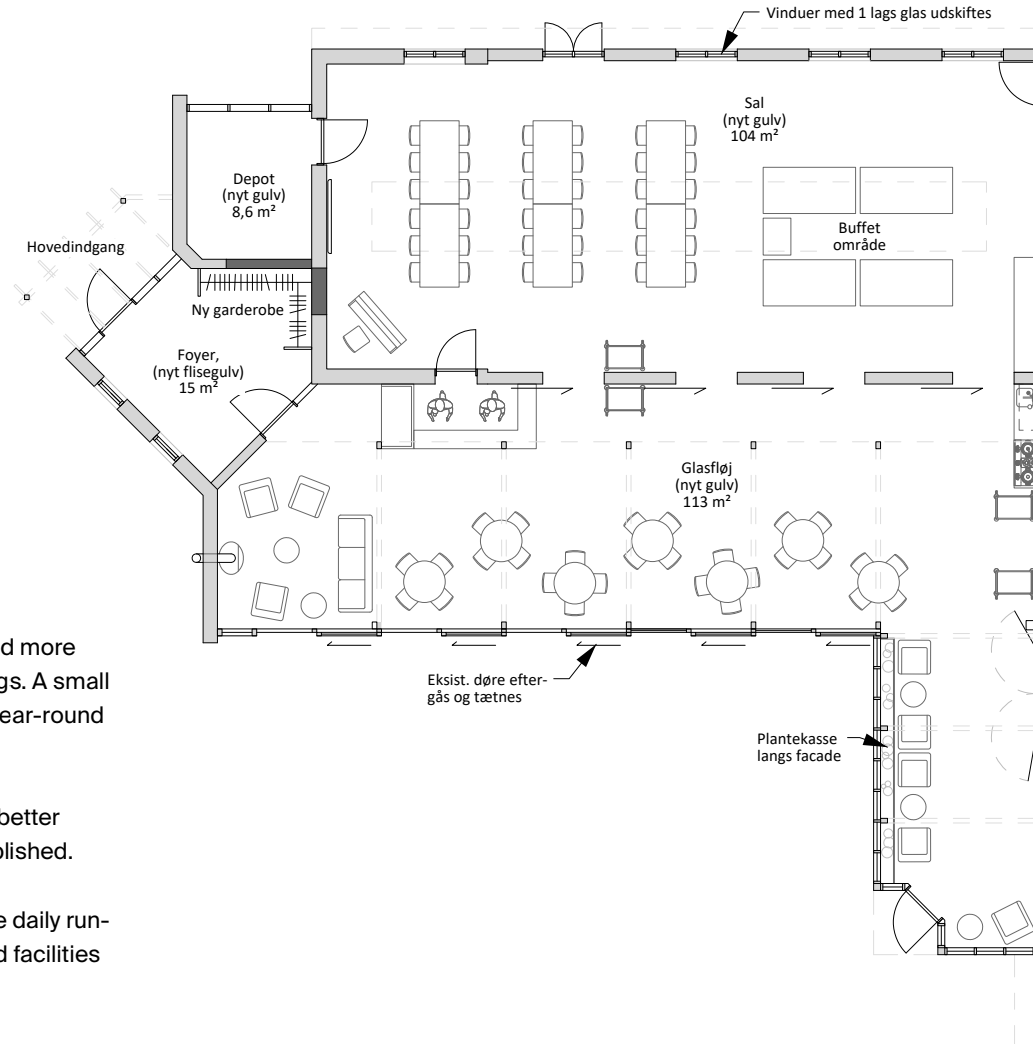
New buildings



Existing buildings



Restaurant Terrassen

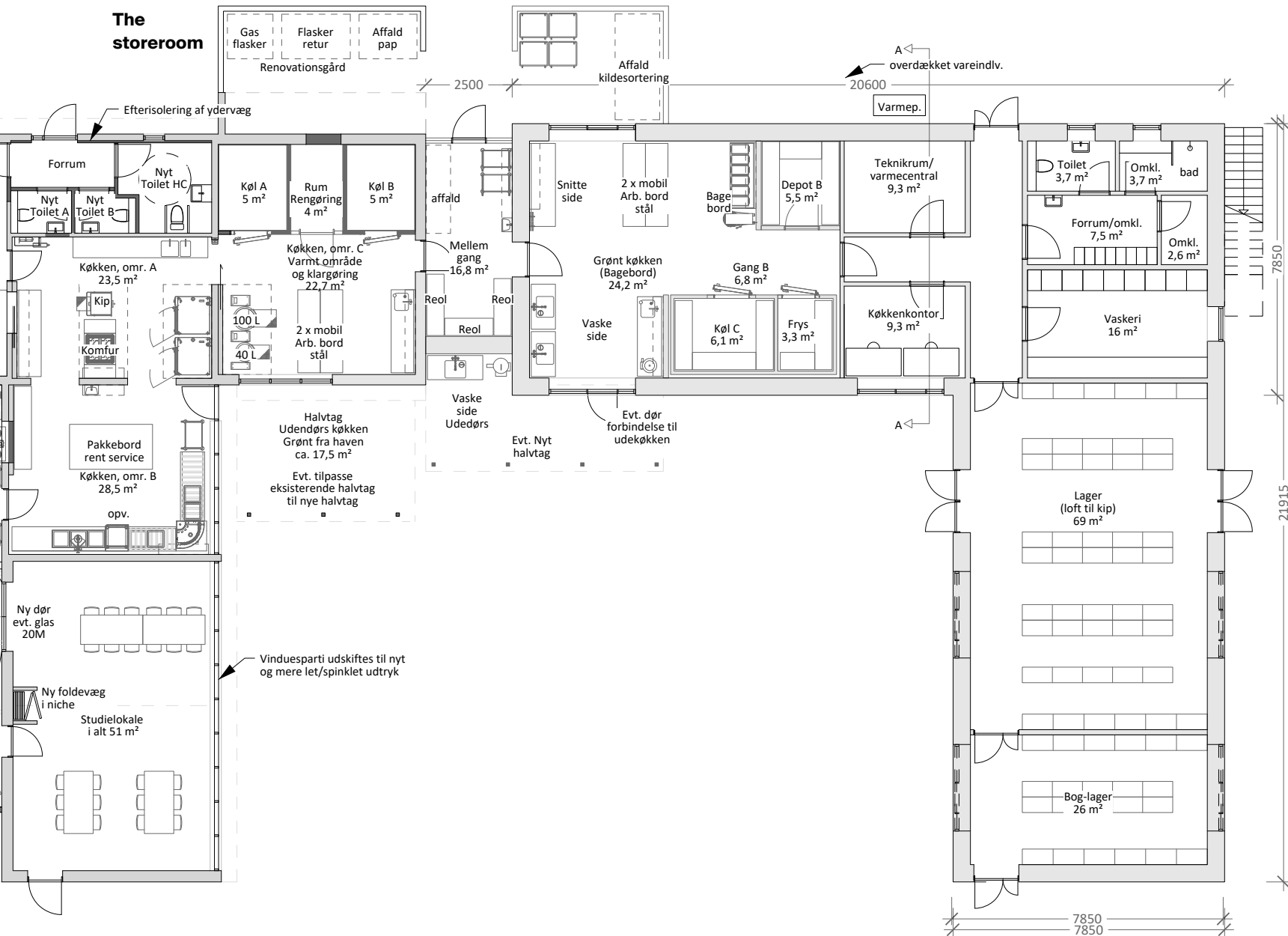


Restaurant Terrassen will be renovated and upgraded to provide a warmer and more welcoming atmosphere with new acoustic ceiling panels and new floor coverings. A small café with a sofa corner will be set up; the glass wing will be equipped with all-year-round heating; the toilet facilities will be renovated and include a disabled toilet etc.

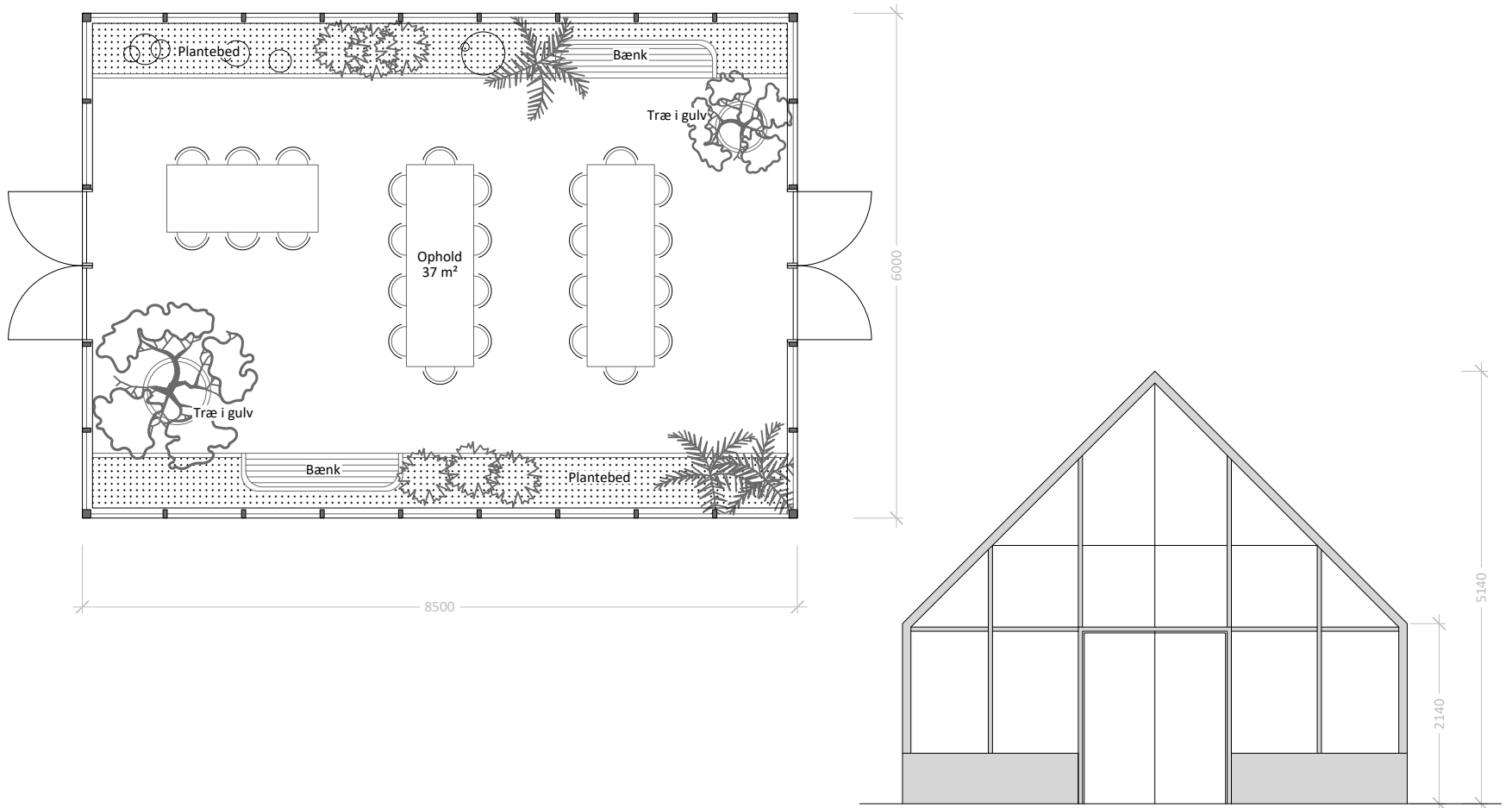
The kitchen will be expanded to include a new extension with more space and better facilities. A small office, changing rooms and toilet facilities for staff will be established.

A laundry and storeroom will be established in the new building to facilitate the daily running of the centre. The storeroom will include space for the storage of books and facilities for managing online book sales.

We expect to begin construction at the beginning of August 2024 and to complete the work just before the 2025 high season.



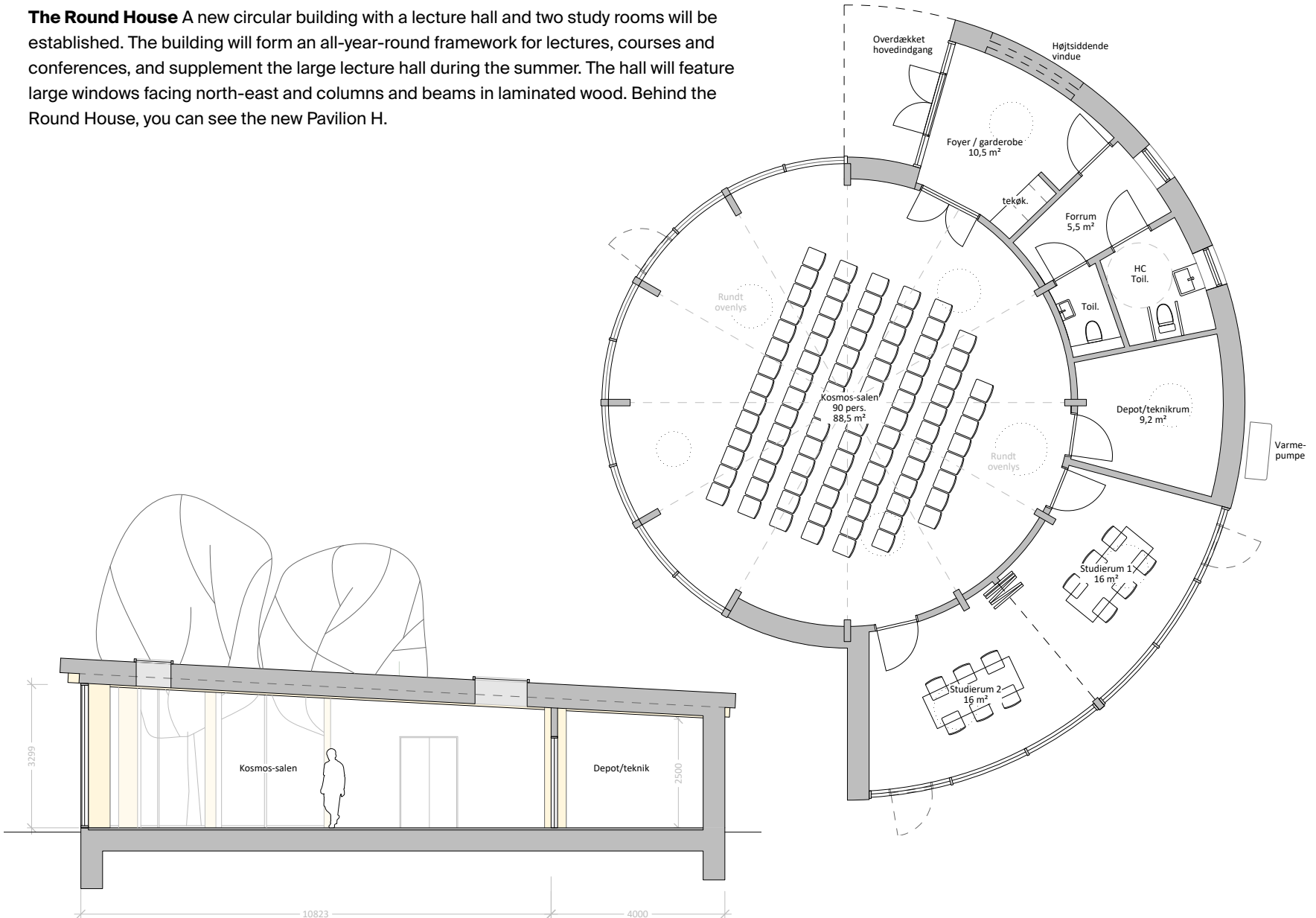
The Orangery will be established beside the current vegetable patch as a recreative space in the garden. There will be plants along the edges and a few free-standing indoor trees. The Orangery can also be used in bad weather as an extra room for socialising or dining.



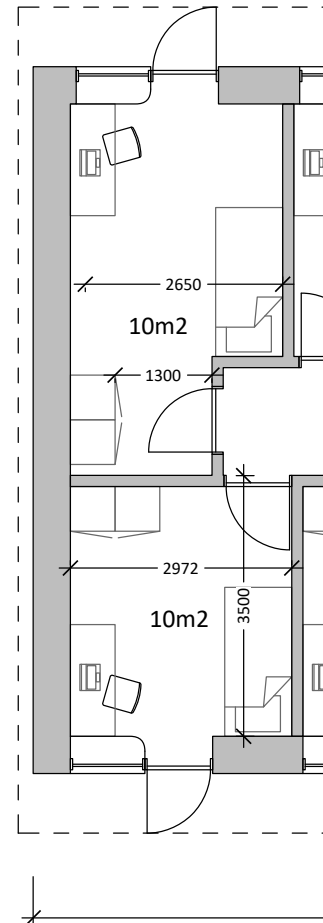
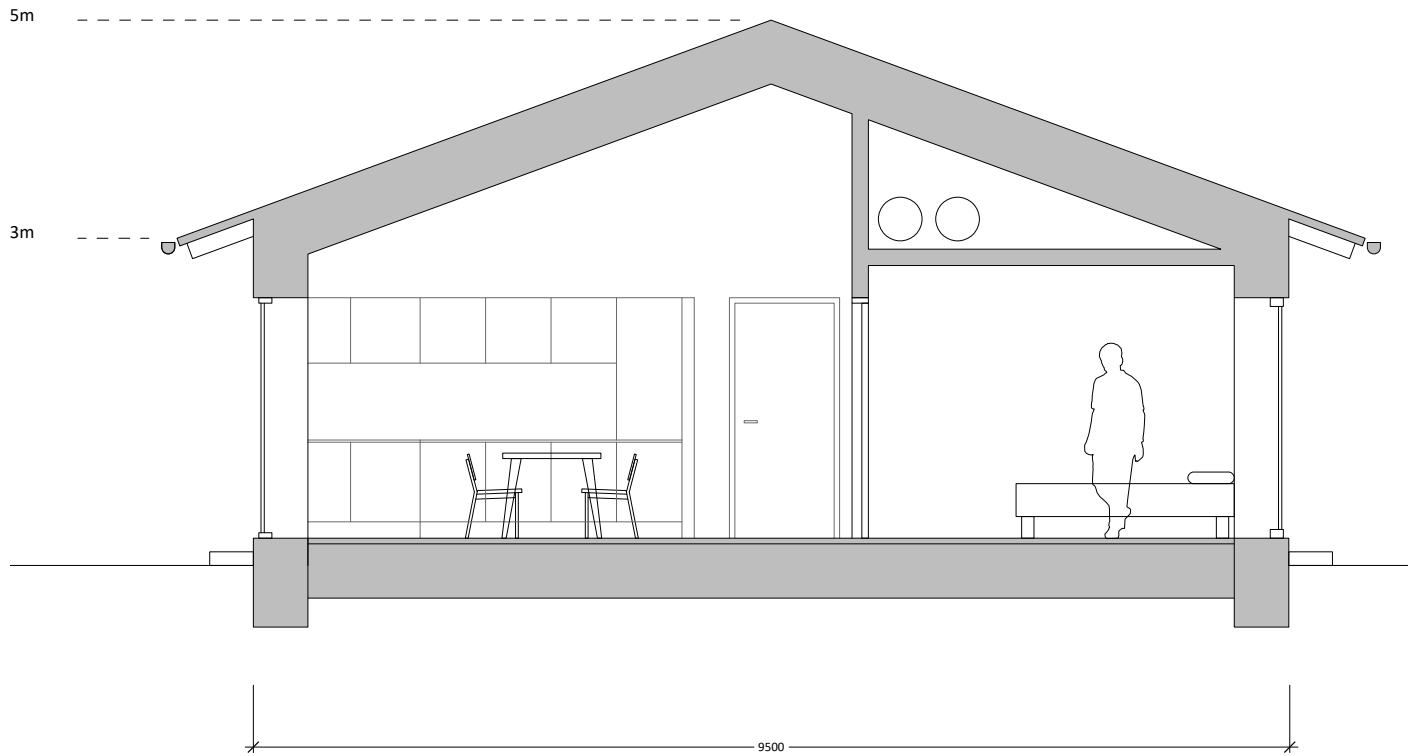
A new courtyard, cosy and sheltered, will be set up between Terrassen with its new extension (an L-shaped building) and the Orangery, where guests can explore the vegetable patch or enjoy the afternoon and evening sun. The area will be a verdant sensory space during the day and in the evening.



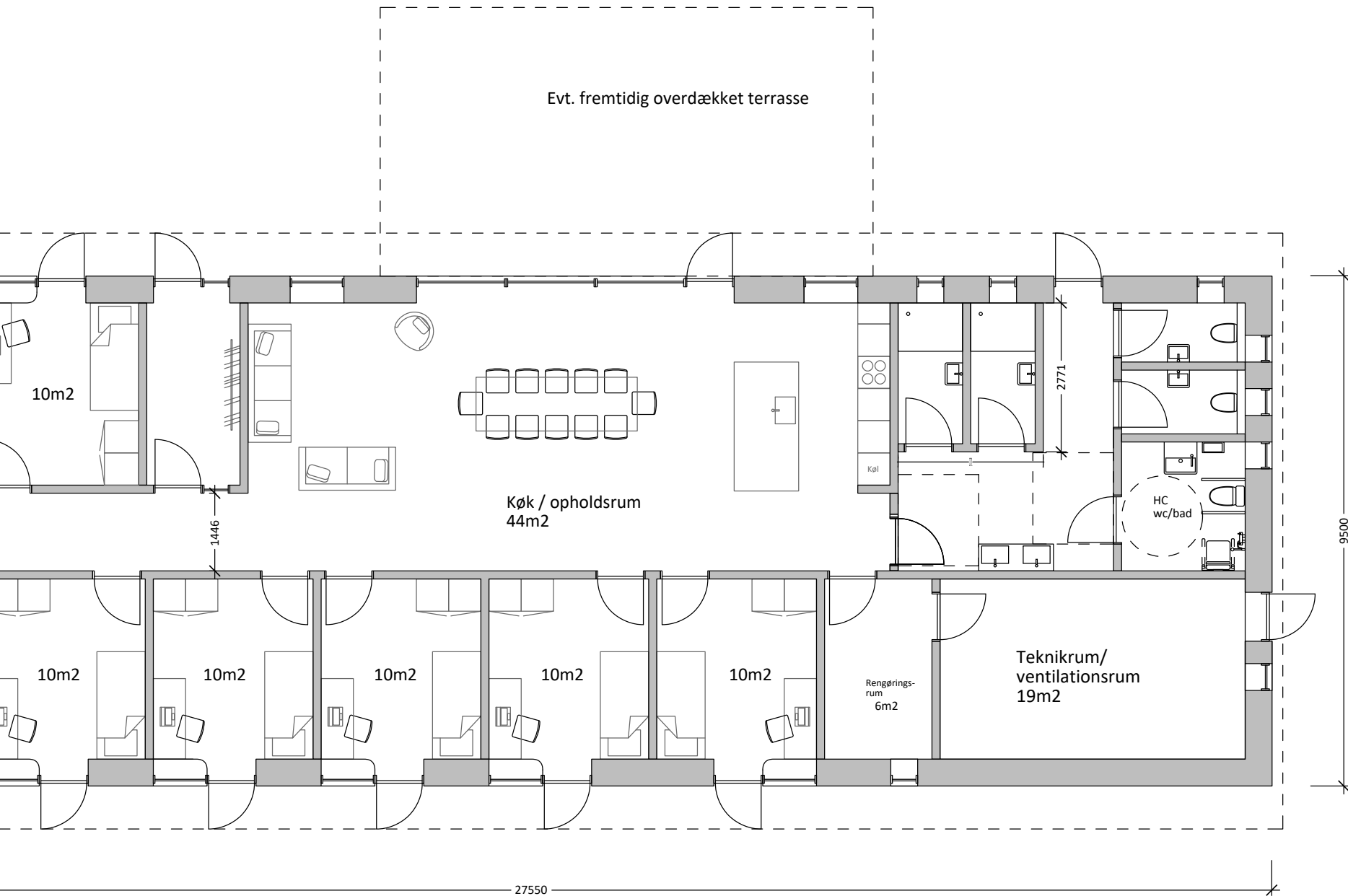
The Round House A new circular building with a lecture hall and two study rooms will be established. The building will form an all-year-round framework for lectures, courses and conferences, and supplement the large lecture hall during the summer. The hall will feature large windows facing north-east and columns and beams in laminated wood. Behind the Round House, you can see the new Pavilion H.







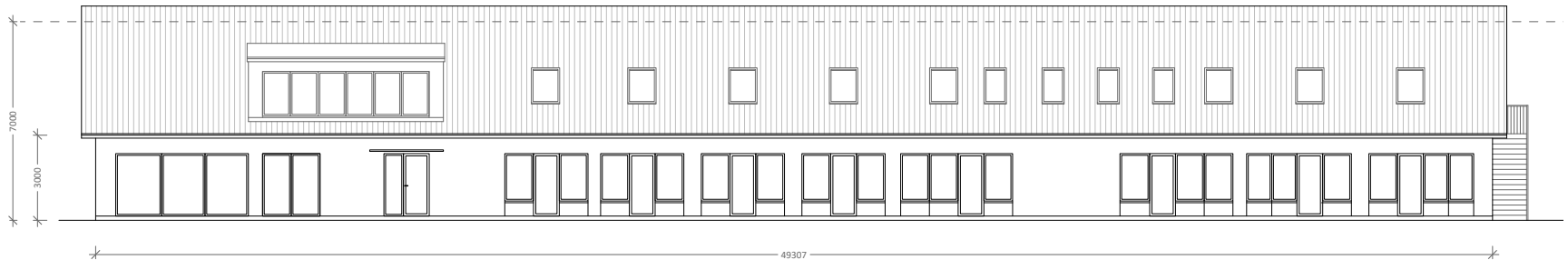
Pavillon H Beside the new extension to Terrassen and near the Round House, a new residential pavilion will be built providing shared living accommodation with eight single rooms and shared facilities (three toilets and two shower rooms). In the middle facing the garden, there will be a large open-plan kitchen with a vaulted ceiling.



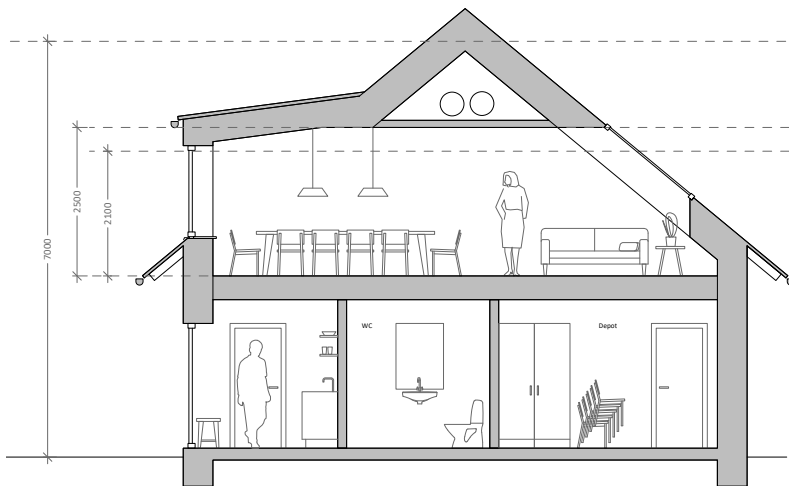
The Garden Four of the building projects will be placed near Restaurant Terrassen and together form a small “urban environment” with several functions. On the illustration you can see Terrassen with the new extension, the Orangery, Pavilion H as well as the Round House with its green roof (sedum roof).



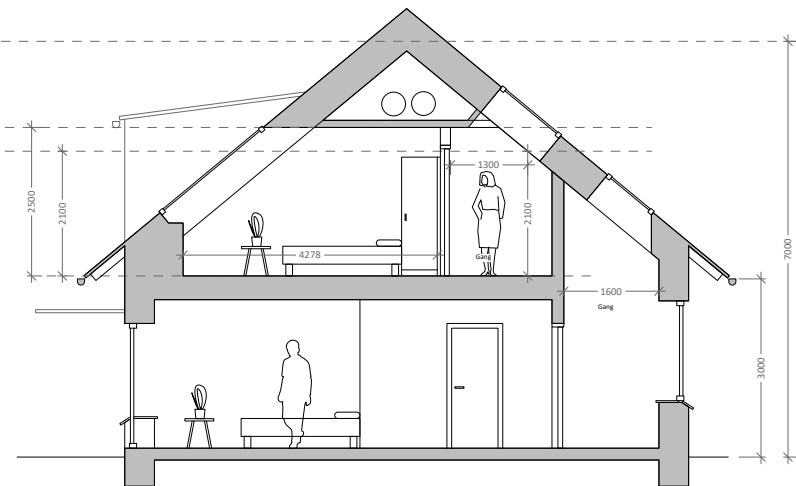
Pavillon D Where “Svinget” is situated today, a new residential pavilion with 15 rooms on two floors will be built. On the ground floor the rooms will have their own kitchens and bathrooms, while on the first floor there will be shared facilities with toilets, bathrooms and a kitchen. The rooms will vary in size with 1-4 beds, including two rooms with access for the disabled.



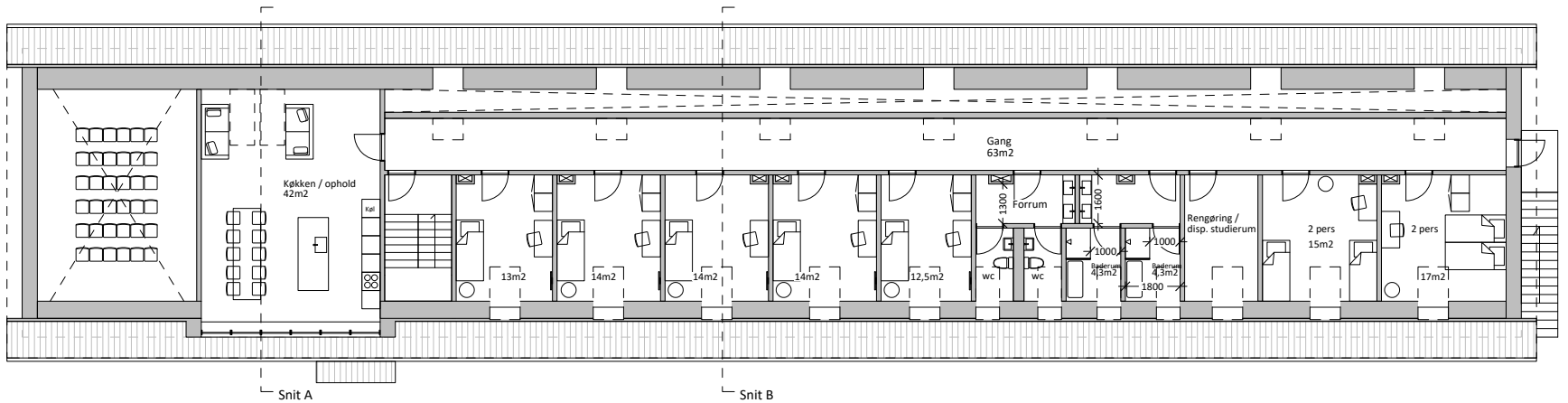
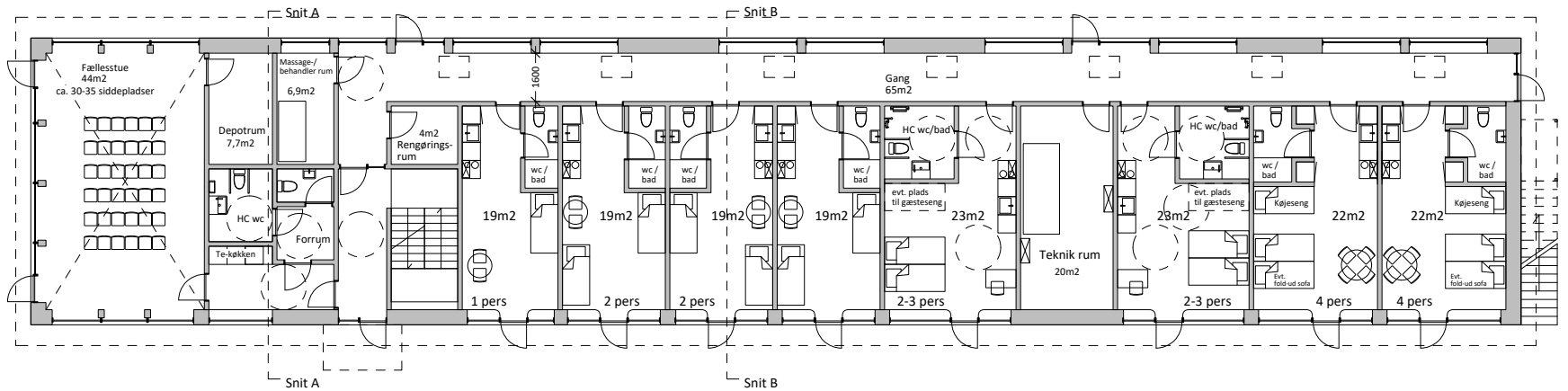
Facade sydøst



Snit A
Fælles funktioner i stuen og
fælleslokale på 1. sal



Snit B
Værelser og fordelingsgange på
begge etager



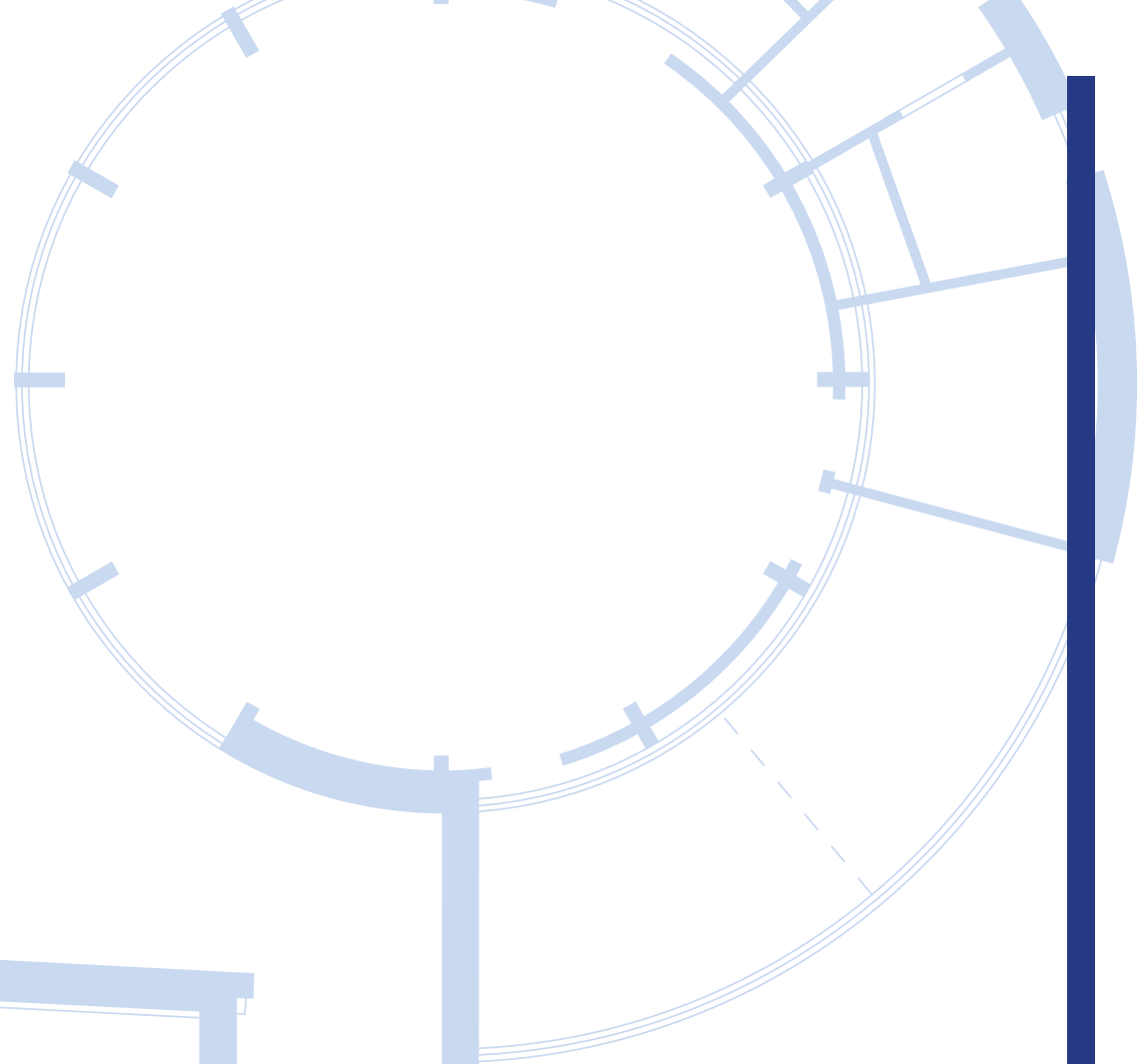
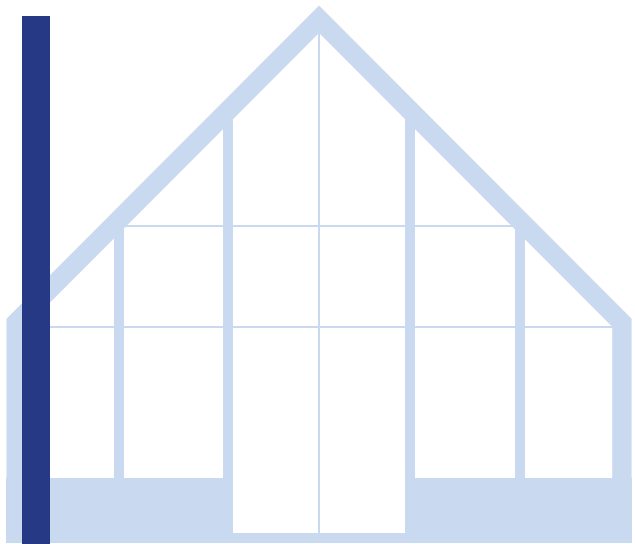
On the ground floor close to the entrance, there will be a new hall with 30–35 seats for lectures, seminars, study groups etc. The hall will have a vaulted ceiling.

Historical timeline



↑ Kosmos Holiday Colony, 1937

- **24 March 1921** – Martinus experiences his cosmic initiation
- **1932** – The first volume of Livets Bog (The Book of Life) is published
- **1933** – The magazine *Kosmos* is published
- **1934** – Martinus buys a large beachfront site near Klint in Odsherred
- **1934-35** – The first summer cottages are built, and Kosmos Holiday Colony is inaugurated
- **1936-37** – The colony grew to 96,655 m² with space for a lecture hall, a nursery for vegetables, an orchard, a guesthouse and more summer cottages
- **1946** – The colony changes its name to Kosmos Holiday Centre
- **1949-50** – Pavilions 1 and B (acquired from a manor house called Klintsøgaard) are converted from chicken houses into holiday flats
- **1962** – The present lecture hall is inaugurated
- **1964** – Restaurant Terrassen, the centre's vegetarian restaurant, opens
- **1977** – The holiday centre changes its name to the Martinus Centre
- **1980** – Martinus gives his last public lecture at the beginning of the summer season in Klint
- **1983** – The newly built Pavilion A is opened
- **1993** – Terrassen is extended and modernised
- **2001** – The newly built Pavilion C is opened
- **2025** – Terrassen is expanded with a new extension with extra space for the kitchen, laundry and storeroom



The Martinus Institute

Mariendalsvej 94-96
DK-2000 Frederiksberg
Denmark

+45 38 38 01 00

Phone hours:
Tues-Thurs 9:00-12:00

The Martinus Centre

Klintvej 69, Klint
DK-4500 Nykøbing Sj.
Denmark

info@martinus.dk
martinus.dk
shop.martinus.dk

